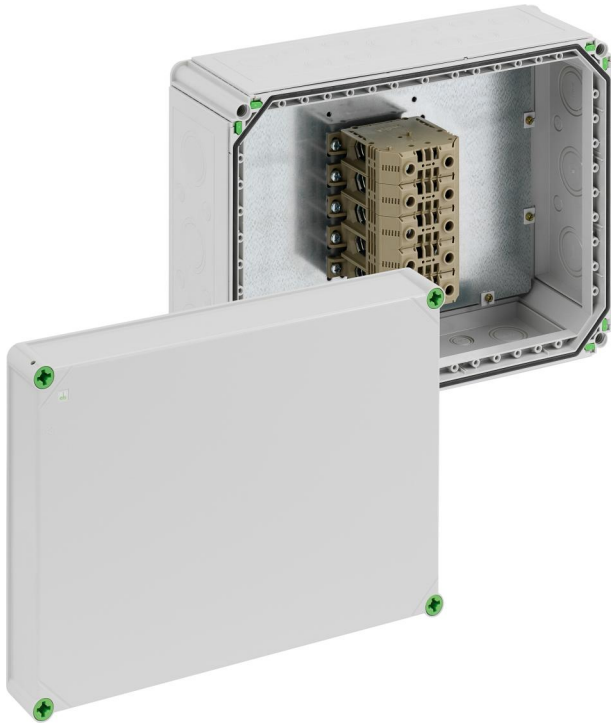


Junction box

Abox-i 1500 DK-150²/5



Abox-i 1500 DK-150²/5

Junction box

Productnumber: 49058601

Dimensions: 440 x 320 x 179 mm

Junction box, protection class IP65, nominal cross-section 150 mm², U_i=690 V AC, knockouts, M16/M20/M25/M32/M40/M50, (24 side), internal fixing points, for installations in industrial environments and protected outdoor areas

grey, with terminal block, 5-pole - 150² (50 to 150 mm²)



Technical Data

electrical characteristics

Rated insulation voltage AC:	690 V
Max. conductor cross section:	150 mm ²
Protection class:	II
Type of protection:	IP65
Number of poles:	5
UL Type Rating:	not specified

Colours

Base unit colour:	grey
Cover colour:	grey

Dimensions

Width:	440 mm
Length:	320 mm
Height:	179 mm
Weight:	5.8 kg

Material characteristics

UV-resistant:	yes
Halogen free:	yes
Glow-wire flammability according to EN 60695-2-11:	960 °C

mechanical properties

Type of fastening:	Wall/ceiling mounting
Impact strength:	IK08
Sealable:	yes
Cover screw torque:	1.7 Nm
Fastening:	internal fixing points

Ambient conditions

max. relative humidity 25°C:	95 %
max. relative humidity 40°C:	50 %
Min. ambient temperature:	-35 °C
Max. ambient temperature:	80 °C
24h ambient temperature:	60 °C
Installation location:	protected outdoor areas

Sales Information

EAN:	4013902641987
Packing Unit Code:	CT
ETIM Class:	EC002600
Custom tariff number:	85369095

Material

Base unit material:	Polycarbonate
Cover material:	Polycarbonate, glass-fibre reinforced
Sealing material:	Polyurethane
Cover screw material:	Polyamide, glass-fibre reinforced

Accessories

[67065001 - URS RK1-150mm² - Terminal](#)

[07303201 - GKE 32 - Cable entry](#)

[07304301 - GKE 43 - Cable entry](#)

[01040101 - GTi 1-g - Empty enclosure](#)

[07220001 - GFL 20 - Flange](#)

[07300301 - GZE 3 - Strain relief](#)

[07280301 - GFG 3 - Flange bar](#)

[07030001 - GAB-ES - External fixing lug](#)

[26202001 - BST M20/sw - Ventilation seal](#)

[26242001 - BST M20 - Ventilation seal](#)

Cable gland

